



**SPECIAL VALUE SALES**  
IMMEDIATELY AVAILABLE



## COMPLETE TENTS

CPL-010	CARBON TENT 4x5,5 m SH 2,80 m.....	5
CPL-012	HEXAGON PARTY TENT ABSIDE.....	6
CPL-013	L-SERIES SMART PLUS 15x10 m SH 5,20 m.....	7

## FACADE AND ROOF PANELING

FAS-002	INSULATED WALL PANEL 60 mm / 5500 x 1000 mm .....	9
FAS-003	INSULATED WALL PANEL 60 mm / 5000 x 1000 mm .....	10
FAS-004	INSULATED WALL PANEL 60 mm / 4120 x 1000 mm .....	11
FAS-019	ALU-WINDOW 1185x3770 mm, silver .....	12
FAS-020	ALU-WINDOW 1172x2370 mm, white .....	13
FAS-021	ALU-WINDOW 2400x1010 mm, silver .....	14
FAS-022	HEADER-ELEMENT 4x1 m + Window sill.....	15
FAS-023	HEADER-ELEMENT 4x1 m + Window sill.....	16
FAS-024	PVC-WINDOW 2000x1000 mm Turn/Tilt.....	17
FAS-025	INSULATED ROOF PANEL 120 mm .....	18
FAS-026	INSULATED WALL PANEL 40 mm.....	19
FAS-027	INSULATED WALL PANEL 60 mm.....	20
FAS-028	INSULATED WALL PANEL 60 mm.....	21
FAS-029	INSULATED WALL PANEL 60 mm.....	22
FAS-030	PVC-HEADER 1185 x 590 mm .....	23
FAS-031	ALUMINIUM - HEADER 1185 x 590 mm .....	24
FAS-032	PVC-DOOR 970x224 cm, white .....	25
FAS-034	STEELDOOR 1000x2125 mm, DIN R.....	26
FAS-035	HEADER PVC 2410x730 mm .....	27

## ACCESSORIES

ACC-006	UPRIGHT for GZ 30 m, SH 3 m .....	29
ACC-009	DOOR CLOSER FOR PVC DOOR .....	30
ACC-010	BALLAST RACK LX 20 m.....	31
ACC-014	RAMP – GABLE.....	32
ACC-015	ROLLER SHUTTER 2000x2500 mm insulated, left.....	33
ACC-016	ROLLER SHUTTER 3000x3500 mm insulated, right.....	34
ACC-017	ROLLER SHUTTER 3500x3500 mm insulated, right.....	35
ACC-018	ROLLER SHUTTER 4878x4600 mm insulated, left.....	36
ACC-022	TRANSPORT RACK f. 2x Door 2410x2330 mm .....	37

ACC-024	ALUMINIUM CANOPY ROOF 2400x1070 mm.....	38
ACC-029	WOOD FLOOR PANEL.....	39
ACC-033	IPC-tank .....	40
ACC-034	Aluminium truss system silver .....	41
ACC-035	Layer steel scaffolding, galvanised.....	42
ACC-036	Emergency spotlight, Fluxsecure light V2.....	43
ACC-037	Container Set (2x20 feet) High Cube Fanshop.....	44
ACC-038	10 ft. Container High Cube .....	45

# COMPLETE TENTS



**HTS**  
TENTIQ

Number	Model/Description	Quantity	Price per piece €
CPL-010	CARBON TENT 4x5,5 m SH 2,80 m	1 Pc.	5.400,00 €

- Tent model: Carbon tent
- Roof shape: A-Frame
- Storage location: 63699 Kefenrod
- Profile: 81x50x3 mm
- Width: 4,00 m
- Length: 5,50 m
- Roof pitch: 18°
- Ridge height: 4,00 m
- Side height: 2,80 m
- Wind bracing-type: Wires
- Upright connection: Eave knuckles
- Anchoring: Stakes
- Ground rails: No
- Special configuration: Outer Tensioning

**without Covers**



[Contact us](#)

Number	Model/Description	Quantity	Price per piece €
CPL-012	HEXAGON PARTY TENT ABSIDE	1 Pc.	3.350,00 €

- Tent model: Party tent Hexagon
- Roof shape: Abside
- Storage location: 63699 Kefenrod
- Profile: 93,5x48x3 mm
- Width: 6,00 m
- Length: 6,00 m
- Bay distance: 3,00 m
- Side height: 2,30 m
- Roof cover PVC-Tensioning: Belt-Tensioning
- Wind bracing-typee: Wires
- Upright connection: Eave knuckles
- Anchoring: Stakes
- Ground rails: Yes
- Art.-no. PZR.0600.230.HM23



**without Covers**

[Contact us](#)

<b>Number</b>	<b>Model/Description</b>	<b>Quantity</b>	<b>Price per piece €</b>
<b>CPL-013</b>	<b>L-SERIES SMART PLUS 15x10 m SH 5,20 m</b>	<b>1 Pc.</b>	<b>30.437,00 €</b>

- Tent model: L-Series Smart
- Roof shape: A-Frame
- Storage location: 63699 Kefenrod
- Profile: 252x122x4 mm
- Width: 15,00 m
- Length: 10,00 m
- Bay distance: 5,00 m
- Side height: 5,20 m
- Roof cover PVC-Tensioning: Pressure-Tensioning
- Wind bracing-typee: Diagonal bar
- Upright connection: Eave knuckles
- Anchoring: Stakes
- Ground rails: No

**Covers – CPL 013**

- 2x Roof cover PVC thermo Incl. aggregate
- 2x Gable triangle PVC thermo
- Walls Steel Sheet

**Accessories – CPL 013**

- 1x Roller shutter
- 1x Steel door



[Contact us](#)

# FACADE AND ROOF PANELING



**HTS**  
TENTIQ

## FACADE AND ROOF PANELING

Number	Model/Description	Quantity	Price per piece €
<b>FAS-002</b>	<b>INSULATED WALL PANEL 60 mm / 5500 x 1000 mm</b>	<b>8 Pc.</b>	<b>25,00 €</b>

- Component: Insulated wall panel
- SAP-Number: IW060.05500.100.07 - 60004092
- Storage location: 63699 Kefenrod
- Thickness: 60 mm
- Length: 5.500 mm
- Width: 1.000 mm
- Color (Inside): RAL 9002 (15μ)
- Color (Outer): RAL 9007 (25μ)
- Sandwich type (Inside): Lined
- Sandwich type (Outer): Lined
- Filling: PUR-Foam
- Screw fitting: Visible



[Contact us](#)

Number	Model/Description	Quantity	Price per piece €
FAS-003	INSULATED WALL PANEL 60 mm / 5000 x 1000 mm	8 Pc.	22,00 €

- Component: Insulated wall panel
- SAP-Number: IW060.05000.100.07 - 60004092
- Storage location: 63699 Kefenrod
- Thickness: 60 mm
- Length: 5.000 mm
- Width: 1.000 mm
- Color (Inside): RAL 9002 (15μ)
- Color (Outer): RAL 9007 (25μ)
- Sandwich type (Inside): Lined
- Sandwich type (Outer): Lined
- Filling: PUR-Foam
- Screw fitting: Visible



[Contact us](#)

<b>Number</b>	<b>Model/Description</b>	<b>Quantity</b>	<b>Price per piece €</b>
<b>FAS-004</b>	<b>INSULATED WALL PANEL 60 mm / 4120 x 1000 mm</b>	<b>34 Pc.</b>	<b>20,00 €</b>

- Component: Insulated wall panel
- SAP-Number: IW060.04120.100.07 - 60004092
- Storage location: 63699 Kefenrod
- Thickness: 60 mm
- Length: 4.120 mm
- Width: 1.000 mm
- Color (Inside): RAL 9002 (15μ)
- Color (Outer): RAL 9007 (25μ)
- Sandwich type (Inside): Lined
- Sandwich type (Outer): Lined
- Filling: PUR-Foam
- Screw fitting: Visible



[Contact us](#)

Number	Model/Description	Quantity	Price per piece €
<b>FAS-019</b>	<b>ALU-WINDOW 1185x3770 mm, silver</b>	<b>8 Pc.</b>	<b>595,00 €</b>

- Component: Window-Element
- SAP-Number: 1000005251
- Width: 1.185 mm
- Height: 3.770 mm
- Frame Material: Aluminium
- Frame color: Silver (Anodized)
- Filling: VSG 8 mm
- Profile: 45 mm
- Variant: Pipe 50x30

[Contact us](#)

Number	Model/Description	Quantity	Price per piece €
<b>FAS-020</b>	<b>ALU-WINDOW 1172x2370 mm, white</b>	<b>2 Pc.</b>	<b>30,00 €</b>

- Component: Window-Element
- SAP-Number: FA.118.237.0100.96
- Width: 1.172 mm
- Height: 2.370 mm
- Frame Material: Aluminium
- Frame color: RAL 9016 – White (P)
- Filling: VSG 6 mm
- Profile: 30 mm
- Variant: Without Alu-Rohr
- Incl. Cover plate bottom 34 cm, PVC 6 mm, white

<b>Number</b>	<b>Model/Description</b>	<b>Quantity</b>	<b>Price per piece €</b>
<b>FAS-021</b>	<b>ALU-WINDOW 2400x1010 mm, silver</b>	<b>4 Pc.</b>	<b>332,00 €</b>

- Component: Avantgarde-Element
- SAP-Number: FA.240.101.1000.70
- Width: 2.400 mm
- Height: 1.010 mm
- Frame Material: Aluminium
- Frame color: Silber (Anodized)
- Filling: VSG 6 mm
- Profile: H121 / H122 / H123
- Variant: Without Alu-Pipe



[Contact us](#)

Number	Model/Description	Quantity	Price per piece €
FAS-022	HEADER-ELEMENT 4x1 m + Window sill	4 Pc.	475,00 €

- Component: Header
- SAP-Number: FA.400.100.003
- Width: 4.000 mm
- Height: 1.000 mm
- Frame Material: Aluminium
- Filling: Polycarbonat EV40-10
- Profile: 55x60/64 mm
- Incl. Window sill: Facade 40 mm/ 110 mm



[Contact us](#)

Number	Model/Description	Quantity	Price per piece €
FAS-023	HEADER-ELEMENT 4x1 m + Window sill	4 Pc.	1.192,00 €

- Component: Header
- SAP-Number: FA.400.100.007
- Width: 4.000 mm
- Height: 1.000 mm
- Frame Material: Aluminium
- Filling: Polycarbonat EV40-10
- Profile: 55x60/64 mm
- Incl. Window sill: Façade 40mm/110 mm (blue)



Number	Model/Description	Quantity	Price per piece €
FAS-024	PVC-WINDOW 2000x1000 mm Turn/Tilt	2 Pc.	65,00 €

- Component: Window-Element
- SAP-Number: FK.200.100.0010.01
- Width: 2.000 mm
- Height: 1.000 mm
- Frame Material: PVC
- Frame color: similar to RAL 9016 (white)
- Filling: Iso-Glas VSG6 / LZR12 / VSG6
- Profile: 70 mm
- Variant: Bottom 60x30 Turn/Tilt, DIN L/R



[Contact us](#)

Number	Model/Description	Quantity	Price per piece €
<b>FAS-025</b>	<b>INSULATED ROOF PANEL 120 mm</b>	<b>32 Pc.</b>	<b>140,00 €</b>

- Component: Insulated roof panel
- SAP-Number: ID120.05610.100.02
- Thickness: 120 mm/80 mm
- Length: 5.610 mm
- Width: 1.000 mm
- Color (Inside): RAL 9002 (15μ)
- Color (Outer): RAL 9002 (25μ)
- Sandwich type Inside: Lined
- Sandwich type Outer: Steel sheet
- Filling: PUR-Foam
- Screw fitting: Visible
- No-foam area: No

[Contact us](#)

Number	Model/Description	Quantity	Price per piece €
<b>FAS-026</b>	<b>INSULATED WALL PANEL 40 mm</b>	<b>28 Pc.</b>	<b>79,00 €</b>

- Component: Insulated wall panel
- SAP-Number: IW040.02944.110.20
- Thickness: 40 mm/40 mm
- Length: 2.944 mm
- Width: 1.100 mm
- Color (Inside): RAL 9002 (15μ)
- Color (Outer): RAL 6020 (25μ)
- Sandwich type Inside: Lined
- Sandwich type Outer: Lined
- Filling: PUR-Foam
- Screw fitting: Visible
- No-foam area: No

[Contact us](#)

Number	Model/Description	Quantity	Price per piece €
<b>FAS-027</b>	<b>INSULATED WALL PANEL 60 mm</b>	<b>10 Pc.</b>	<b>85,00 €</b>

- Component: Insulated wall panel
- SAP-Number: IW060.04100.100.06
- Thickness: 60 mm/60 mm
- Length: 4.100 mm
- Width: 1.000 mm
- Color (Inside): RAL 9002 (15µ)
- Color (Outer): RAL 9007 (25µ)
- Sandwich type Inside: Lined
- Sandwich type Outer: Lined
- Filling: PUR-Foam
- Screw fitting: Visible
- No-foam area: No

[Contact us](#)

Number	Model/Description	Quantity	Price per piece €
<b>FAS-028</b>	<b>INSULATED WALL PANEL 60 mm</b>	<b>5 Pc.</b>	<b>118,00 €</b>

- Component: Insulated wall panel
- SAP-Number: IW060.05090.100.06
- Thickness: 60 mm/60 mm
- Length: 5.090 mm
- Width: 1.000 mm
- Color (Inside): RAL 9002 (15μ)
- Color (Outer): RAL 9006 (25μ)
- Sandwich type Inside: Lined
- Sandwich type Outer: Lined
- Filling: PUR-Foam
- Screw fitting: Visible
- No-foam area: No

[Contact us](#)

Number	Model/Description	Quantity	Price per piece €
<b>FAS-029</b>	<b>INSULATED WALL PANEL 60 mm</b>	<b>6 Pc.</b>	<b>151,00 €</b>

- Component: Insulated wall panel
- SAP-Number: IW060.06550.100.06
- Thickness: 60 mm/60 mm
- Length: 5.500 mm
- Width: 1.000 mm
- Color (Inside): RAL 9002 (15µ)
- Color (Outer): RAL 9007 (25µ)
- Sandwich type Inside: Lined
- Sandwich type Outer: Lined
- Filling: PUR-Foam
- Screw fitting: Visible
- No-foam area: No

[Contact us](#)

Number	Model/Description	Quantity	Price per piece €
FAS-030	PVC-HEADER 1185 x 590 mm	1 Pc.	75,00 €

- Component: PVC-Header
- SAP-Number: OK.118.059.0000.00
- Storage location: 63699 Kefenrod
- Color: White – similar to RAL 9010
- Measurements: 1.185 x 590 mm
- Filling: VSG 6 mm clear
- Profile: 70 mm



[Contact us](#)

Number	Model/Description	Quantity	Price per piece €
FAS-031	ALUMINIUM - HEADER 1185 x 590 mm	3 Pc.	116,00 €

- Component: Aluminium-Header
- SAP-Number: OA.118.059.0000.00
- Storage location: 63699 Kefenrod
- Color: White RAL 9016
- Measurements: 1.185 x 590 mm
- Filling: VSG 6 mm clear
- Profile: 45 mm



[Contact us](#)

Number	Model/Description	Quantity	Price per piece €
FAS-032	PVC-DOOR 970x224 cm, white	1 Pc.	85,00 €

- Component: Single Door
- SAP-Number: 1000003143
- Anschlagrichtung: DIN Right
- Zerlegbar: No
- Material: PVC
- Width: 970 mm
- Height: 2.240 mm
- Cover plate: Without Cover plate
- Color: White
- Filling: PVC 6mm White
- Variants: Inside and outside door handle
- Door closer: Without Door closer
- Variant: L/R Alu L-Profile 50x40x3mm



[Contact us](#)

Number	Model/Description	Quantity	Price per piece €
FAS-034	STEELDOOR 1000x2125 mm, DIN R	1 Pc.	835,00 €

- Component: Steeldoor
- SAP-Number: TSB.1000.2125.021
- Doorart: Single door
- Width: 1.000 mm
- Height: 2.125 mm
- Thickness (Door): 62 mm
- Frame: Steel
- Frame color: RAL9002 (25μ) – Grey white
- Filling: Mineral wool
- Glazing: Without Glazing
- Door hinge: DIN Right (from the outside)
- Variant: Door knob (panic function)
- Door lock: Mortise lock (panic-function) D
- Bottom seal: Bottom seal lowerable
- Door frame: Block4.1 (Mineral wool)
- Variant: No U-profiles



[Contact us](#)

Number	Model/Description	Quantity	Price per piece €
FAS-035	HEADER PVC 2410x730 mm	1 Pc.	265,00 €

- Component: PVC-Header
- SAP-Number: OK.241.073.0040.00
- Storage location: 63699 Kefenrod
- Color: White – similar to RAL 9016
- Measurements: 2410x730 mm
- Filling: PVC 6 mm, white
- Profile: 70 mm



[Contact us](#)

# ACCESSORIES

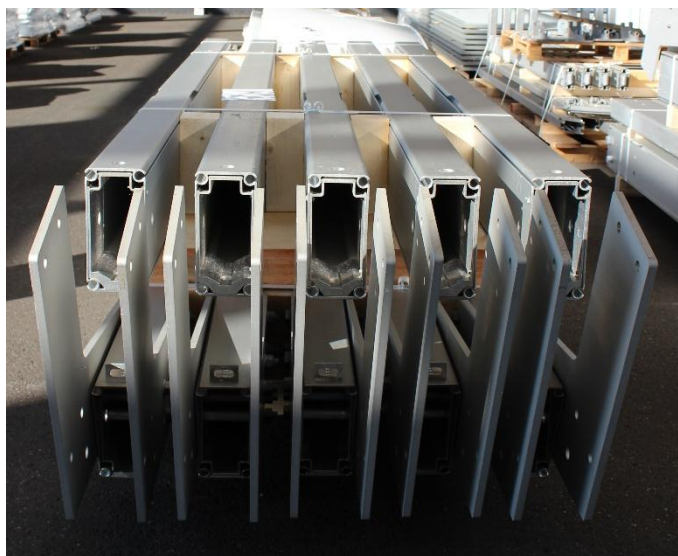


**HTS**  
TENTIQ

## ACCESSORIES

Number	Model/Description	Quantity	Price per piece €
ACC-006	UPRIGHT for GZ 30 m, SH 3 m	28 Pc.	355,00 €

- Component: Upright
- SAP-Number: 003.02940.114
- Tent model: Bigtent Röder HTS
- Material: Aluminium (EN AW-6005A T6) Anodized
- Color: No varnish / not powdered
- Measurements: 252x120x6/4mm
- Side height: 3,00 m
- Length (Aluminium): 2.940 mm
- Tensioning: Belt tensioning
- Eave connection: Twin plate
- Incl. mounting f. Eave knuckle (ST.3005.070.001)
- Incl. Connection for Cross rail



[Contact us](#)



Number	Model/Description	Quantity	Price per piece €
ACC-010	BALLAST RACK LX 20 m	14 Pc.	364,00€

- Component: Ballast rack
- SAP-Number: BA.1080.1080.004
- Material: Steel (S355JR / St52)
- Surface: Hot-dip galvanized (DAST 022)
- Length: 1.080 mm
- Width: 1.080 mm
- Tent model: L-Series



[Contact us](#)

Number	Model/Description	Quantity	Price per piece €
ACC-014	RAMP – GABLE	1 Pc.	125,00 €

- Component: Ramp
- SAP-Number: RA.01000.045.001
- Material: Aluminium (EN AW-5754 H114)
- Surface: Wart plate, Dual (Alu)
- Usage for: Outer
- Length: 1.825 mm
- Width: 1.000 mm



[Contact us](#)

Number	Model/Description	Quantity	Price per piece €
ACC-015	ROLLER SHUTTER 2000x2500 mm insulated, left	1 Pc.	290,00 €

- Component: Roller shutter
- SAP-Number: ROTO.200.250.002.L
- Material: Steel
- Width: 2.000 mm
- Height: 2.500 mm
- Insulation: Yes
- Color: Tank Inside/Outer
- Coating: transparent
- Motor: 400 Volt
- Motor-Position: Left (from the inside)
- Bottom seal: Yes



[Contact us](#)

Number	Model/Description	Quantity	Price per piece €
--------	-------------------	----------	-------------------

<b>ACC-016</b>	<b>ROLLER SHUTTER 3000x3500 mm insulated, right</b>	<b>1 Pc.</b>	<b>855,00</b>
----------------	---	--------------	---------------

€Component: Roller shutter

- SAP-Number: ROTO.300.350.002.R
- Material: Steel
- Width: 3.000 mm
- Height: 3.500 mm
- Insulation: Yes
- Color: Tank Inside/Outer
- Coating: transparent
- Motor: 400 Volt
- Motor-Position: Right (from the inside)
- Bottom seal: Yes



[Contact us](#)

Number	Model/Description	Quantity	Price per piece €
ACC-017	ROLLER SHUTTER 3500x3500 mm insulated, right	2 Pc.	425,00 €

- Component: Roller shutter
- SAP-Number: ROTO.350.350.002.R
- Material: Steel
- Width: 3.500 mm
- Height: 3.500 mm
- Insulation: Yes
- Color: Tank Inside/Outer
- Coating: transparent
- Motor: 400 Volt
- Motor-Position: Right (from the Inside)
- Bottom seal: Yes



[Contact us](#)

Number	Model/Description	Quantity	Price per piece €
ACC-018	ROLLER SHUTTER 4878x4600 mm insulated, left	1 Pc.	3.006,00 €

- Component: Roller shutter
- SAP-Number: ROTO.488.460.002.L
- Material: Steel
- Width: 4.878 mm
- Height: 4.600 mm
- Insulation: Yes
- Color: Tank Inside/Outer
- Coating: transparent
- Motor: 400 Volt
- Motor-Position: Left (from the Inside)
- Bottom seal: Yes



[Contact us](#)

Number	Model/Description	Quantity	Price per piece €
ACC-022	TRANSPORT RACK f. 2x Door 2410x2330 mm	2 Pc.	514,00 €

- Component: Transport rack
- SAP-Number: TG.2510.0675.002
- Material: Steel (S235JR / St37)
- Surface: Hot-dip galvanized (DASt 022)
- Measurements (LxW): 2510x675 mm
- Usage for: 2x double door 2410x2330 mm
- Fork lift pockets: Yes



[Contact us](#)

Number	Model/Description	Quantity	Price per piece €
ACC-024	ALUMINIUM CANOPY ROOF 2400x1070 mm	6 Pc.	856,00 €

- Component: Canopy roof
- SAP-Number: VO.240.100.02-9016
- Material: Aluminium (EN AW-5005 H24/34)
- Surface: Powder coated
- Color: RAL 9016 - white
- Width: 2.400 mm
- Tiefe: 1.070 mm
- Height: 200 mm



[Contact us](#)

Number	Model/Description	Quantity	Price per piece €
ACC-029	WOOD FLOOR PANEL	962 Pc.	20,00 €

- Component: Wood floor panel
- SAP-Number: SUB.4950.0500.003P
- Material: Wood (3-Layer)
- Width: 500 mm
- Length: 4.950 mm
- Thickness: 21 mm
- Difference: +1/-1mm
- Front milling: Yes
- Quality: Melamine resin /Swiss Colorway
- Quantity Oblique bar: 6 ST
- Quantity Head bar: 0 ST



[Contact us](#)

Number	Model/Description	Quantity	Price per piece €
ACC-033	IPC-tank	2 unit	150,00 €

- IPC-tank
- 1.000 litre capacity
- Sold as seen



[Contact us](#)

Number	Model/Description	Quantity	Price per piece €
ACC-034	Aluminium truss system silver	1 unit	1.800,00 €

- Aluminium truss system silver
- Sold as seen



[Contact us](#)

Number	Model/Description	Quantity	Price per piece €
--------	-------------------	----------	-------------------

**ACC-035**      **Layer steel scaffolding, galvanised**      **1 unit**      **14.000,00 €**  
**(all-purpose scaffolding)**

- Layer steel scaffolding, galvanised
- Sold as seen



[Contact us](#)

Number	Model/Description	Quantity	Price per piece €
--------	-------------------	----------	-------------------

**ACC-036      Emergency spotlight, Fluxsecure light V2      4 units      450,00 €**  
**in carrying case**

- Emergency spotlight, Fluxsecure light V2
- in carrying case
- faulty battery
- Sold as seen



[Contact us](#)

Number	Model/Description	Quantity	Price per set €
--------	-------------------	----------	-----------------

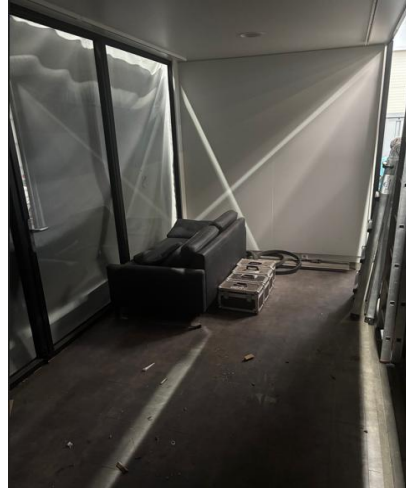
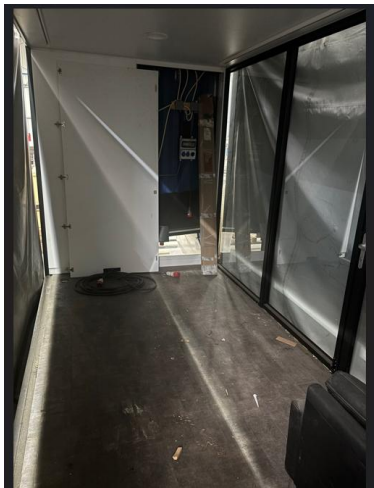
**ACC-037**

**Container Set (2x20 feet) High Cube Fanshop**

**1 Set**

**6.500,00 €**

- each 20-foot high-cube container
- Fan shops 1 and 2 with built-in counters and glass fronts (LxWxH) approx. 6.06 x 2.44 x 2.89 m
- sold as seen
- to be sold as a set only



[Contact us](#)

<b>Number</b>	<b>Model/Description</b>	<b>Quantity</b>	<b>Price per piece €</b>
---------------	--------------------------	-----------------	--------------------------

**ACC-038**

**10 ft. Container High Cube**

**1 unit**

**1.500,00 €**

- 1 piece 10 feet Container High Cube
- 1 side wall with a small viewing window
- without electric
- (LxWxH) approx. 2,99x2,44x2,89 m
- bought like seen



[Contact us](#)



**HTS TENTIQ GmbH**

Hinter der Schlagmühle 1  
63699 Kefenrod

**T** +49 60 49 - 95 10 0  
verkauf@hts-tentiq.com  
www.hts-tentiq.com



**HTS**  
TENTIQ